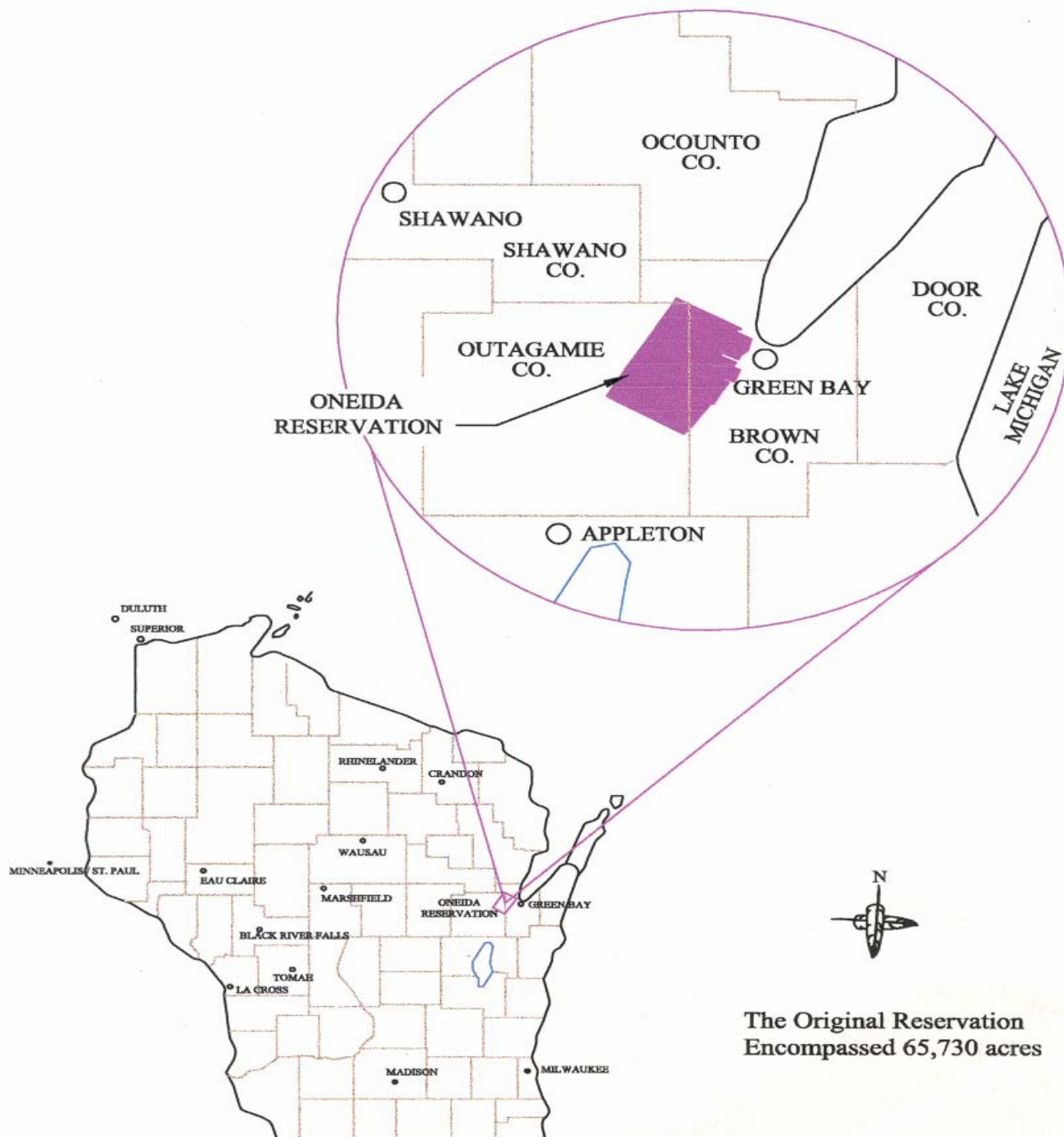




Oneida Nation

Environmental, Health & Safety Area



The Original Reservation
Encompassed 65,730 acres

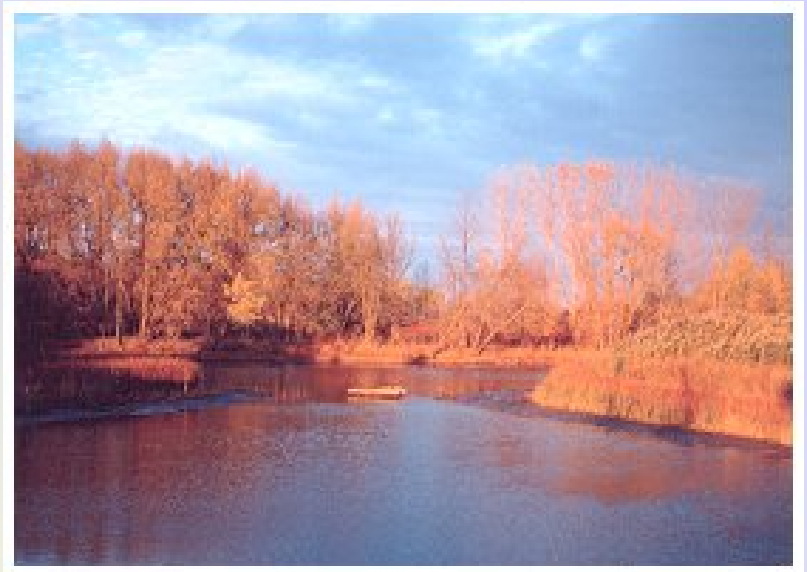
Oneida Nation Reservation



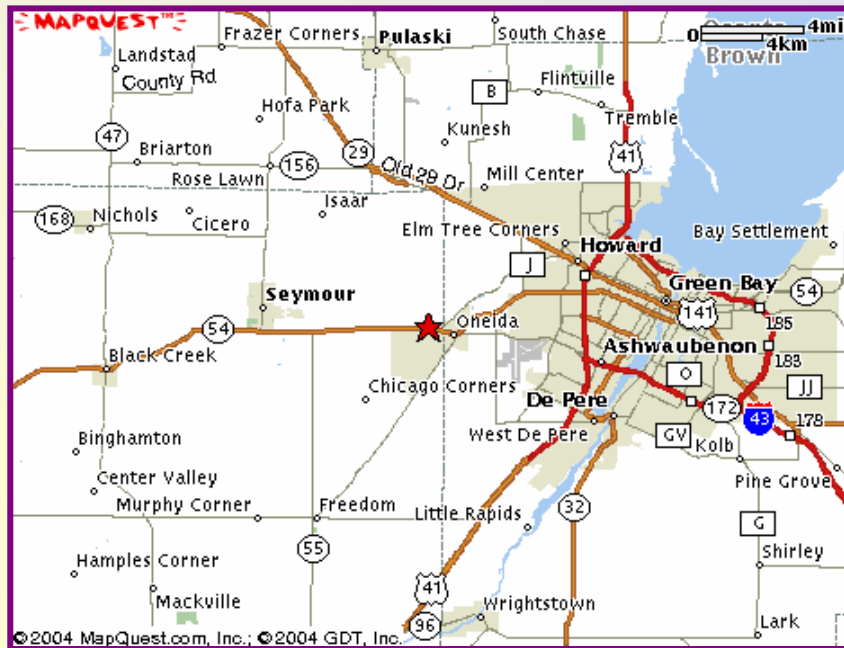
- Approximately 100 square miles (65,400 acres)
- Two nearly level plains separated by a complicated ridge and valley system with a northeast-southwest orientation
- Gently rolling topography and silty-clay till soils

Oneida Nation Reservation

- 1500 wetland acres (2.2%)
- 354 acres –Tribally owned
- 233 miles of rivers, creeks, & streams; and
- Seventy eight (78) lakes and ponds covering 112 acres.
- Surface waters drain to Lake Michigan-Great Lakes Basin



Oneida Nation Reservation



- Established by the Oneida Treaty of 1838 (7 Stat. 566, Feb. 3, 1838)
- Brown and Outagamie Counties
- City of Green Bay
- Villages of Ashwaubenon, Hobart and Howard
- Towns of Oneida, and Pittsfield.

Oneida Nation Reservation



- 16,000 acres (25%) Tribally owned
- 7,000 Agriculture
- 3,140 Tribal members and 17,909 Non-Oneida on Reservation
- 15,196 enrolled Oneidas

Oneida Nation Reservation



- 2,900 employees
- 50 Tribal buildings
- 6 Tribal divisions
- 3 Tribal businesses
- Commercial Land Leases
- Non-tribal businesses on Reservation

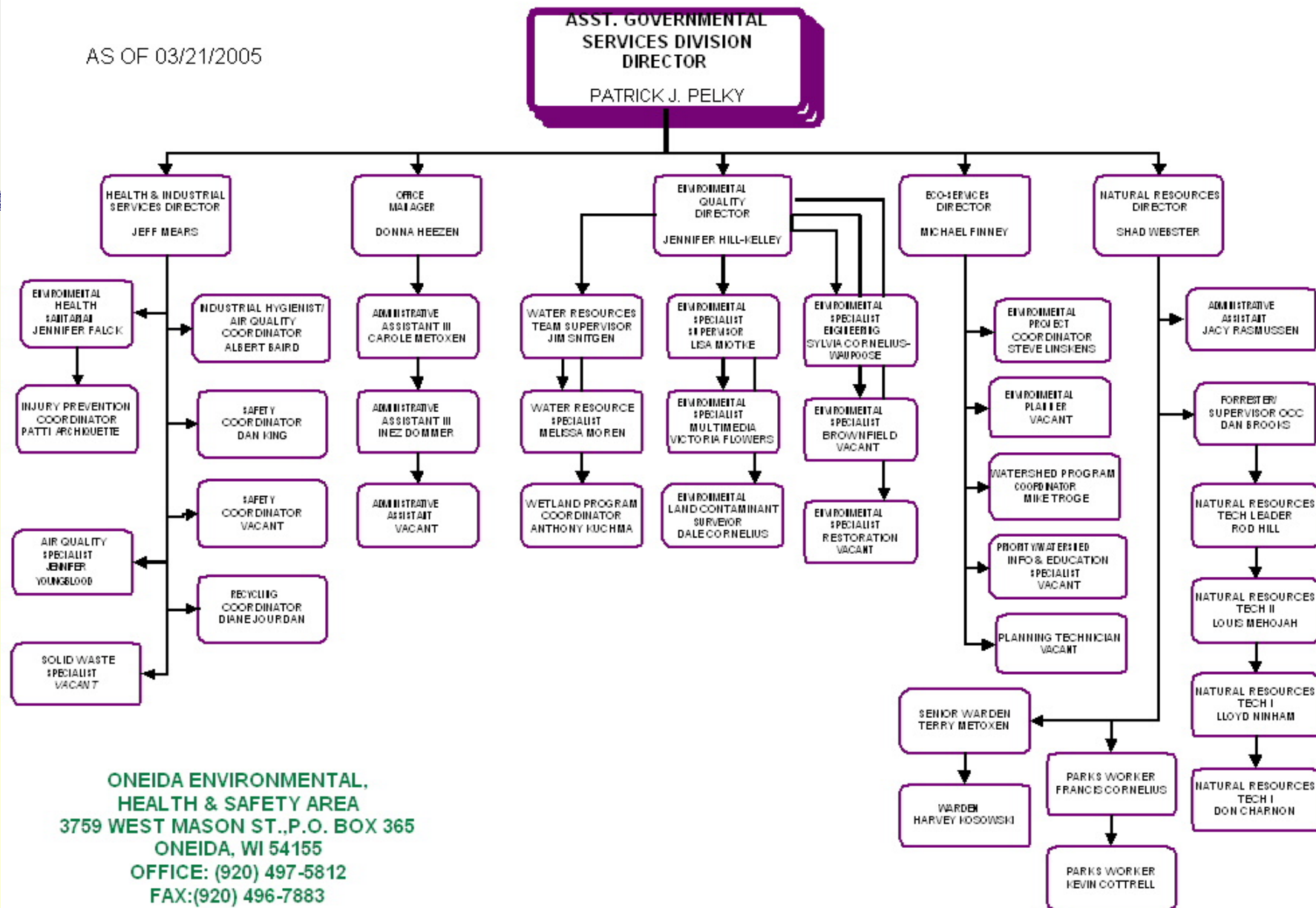
Environmental Health & Safety Area

- Health & Industrial Services
- Eco-Services
- Conservation
- Environmental Quality



ENVIRONMENTAL, HEALTH & SAFETY

AS OF 03/21/2005



**ONEIDA ENVIRONMENTAL,
HEALTH & SAFETY AREA**
3759 WEST MASON ST., P.O. BOX 365
ONEIDA, WI 54155
OFFICE: (920) 497-5812
FAX: (920) 496-7883

Health & Industrial Services

- Air Quality
- Sanitarian – Environmental Health
- Municipal Recycling
- Occupational Safety
- Injury Prevention
- Industrial Hygiene

Health & Industrial Services

Air Quality

- Public Outreach Programs
- Maintain Emissions Inventory
- Research & Reporting of Air Quality
- Research & Report Long Term Effects of Air Pollution



Health & Industrial Services

Environmental Health

- Food Service Inspection & Licensing
- Food Handler Training
- Private Well Sampling
- Annual Rabies Clinic



Health & Industrial Services

Municipal Recycling

- Pollution Prevention Education
- Monitor Waste Service
- Illegal Dumping Investigation
- Semi-Annual Clothing Exchange



Health & Industrial Services

Occupational Safety

- Employee Training
- Safety Inspections
- Emergency Management Planning
- Program Evaluation



Health & Industrial Services

Injury Prevention

- Community Education & Events
- Injury Data Collection & Evaluation
- Seat Belt Surveys



Health & Industrial Services

Industrial Hygiene

- Indoor Air Quality Inspections
- Asbestos Inspections
- Lead in Paint Inspections
- Project Management



Eco-Services

Watershed & Wildlife Habitat Restoration

- Provide Technical & Financial Assistance to the Oneida Farm, Tsyunhehkwa, & other farmers who lease Tribal Agriculture Land so that they can Reduce Pollution to Waterways.
- Assist in the Restoration of Farmlands back into Natural Areas.
- Administer Several Conservation Grants & Programs.



Eco-Services

Community Environmental Projects

- Provide Assistance for Sustainable Practices such as: Energy Conservation, Renewable Energy, Sustainable Agriculture, & Demolition Material Recycling.
- Provide Assistance regarding Stormwater or Run-off Problems.
- Encourage Natural Landscaping & Stormwater Management around Tribal Buildings.

Conservation

- Tree & Forest Management
- Technical & Educational Assistance
- Wood Waste Recycling
- Aquatic Restoration
- Wetland Restoration
- Parks Services



Conservation

- Hunting & Fishing Laws
- Animal Control (Domestic/Wild)
- Management of Wildlife Resources
- Other Services
 - Construct and/or Deliver Picnic Tables for Rentals/Purchases
 - Longhouse Construction
 - Maintain Recreational Trails & Areas
 - Cost free Labor Provided to Tribal Elders & Departments

Environmental Quality

- Environmental Compliance
- Research
- Collaborative Efforts



Environmental Quality

- Environmental Education
- Water Resources Program
- Restoration





For more information:

**Oneida Tribe of WI
Environmental, Health & Safety
Area**

**PO Box 365
Oneida, WI 54155
920.497.5812
www.oneidanation.org**